

# WIND101A

## WIND SPEED DATA LOGGER



### Features

- Durable Housing for Logger
- 3-cup Anemometer
- 0 to 100 MPH (0 to 160KPH) Range
- 0.085 MPH Resolution at a 10 Second Sampling Rate
- $\pm 2.5\%$  Calibrated Accuracy over 10 to 100 MPH (16 to 160 KPH) Range
- 1 Second Reading Rate
- Multiple Start/Stop Function
- Ultra High Speed Download
- 500,000 Reading Storage Capacity
- Battery Life Indicator
- Optional Password Protection
- Field Upgradeable

### Benefits

- Simple Setup and Installation
- Minimal Long-Term Maintenance
- Long-Term Field Deployment

### Applications

- Alternative Energy Studies
- Meteorology/Climatology
- Wind Turbine Location Assessments



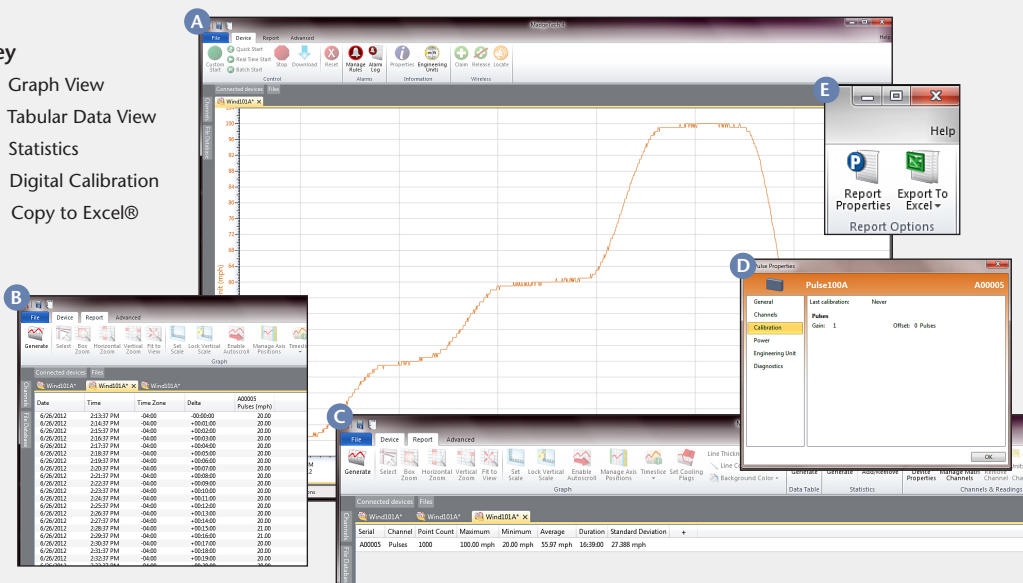
The Wind101A is a complete system to accurately measure and record wind speed. This low cost wind speed recording system comes complete with a data logger, weather-proof enclosure, a three-cup anemometer and all the necessary cabling to quickly get up-and-running. The logger can record up to 500,000 readings and the storage medium is non-volatile, solid state memory, providing maximum data security even if the battery becomes discharged.

The device can be started and stopped directly from a computer using our user-friendly software.

## MADGETECH DATA LOGGER SOFTWARE

### Key

- A Graph View
- B Tabular Data View
- C Statistics
- D Digital Calibration
- E Copy to Excel®



- ### Software Features:
- Multiple graph overlay
  - Statistics
  - Digital calibration
  - Zoom in/ zoom out
  - Lethality equations (F0, PU)
  - Mean Kinetic Temperature
  - Full time zone support
  - Data annotation
  - Min./Max./Average lines
  - Data table view
  - Automatic report generation
  - Summary view
  - Multilingual

# WIND101A SPECIFICATIONS\*

<b>Measurement Range:</b>	0 to 100 mph (0 to 45 m/s)	<b>Password Protection:</b>	An optional password may be programmed into the device to restrict access to configuration options. Data may be read out without the password.
<b>Resolution:</b>	0.085 mph at 10 second reading interval	<b>Engineering Units:</b>	See the Wind101A Quick Setup Guide for instructions on how to program windspeed engineering units.
<b>Accuracy:</b>	±2.0 mph from 0 to 10 mph ±2.5% of reading from >10 to 100 mph	<b>Battery Type:</b>	3.6V lithium battery included; <b>user replaceable</b>
<b>Starting Threshold:</b>	1.75 mph	<b>Battery Life:</b>	Dependent on frequency and duty cycle. 10 months typical at 25 °C and 10 second reading rate
<b>Reading Rate:</b>	1 reading every second to 1 every 24 hours	<b>Time Accuracy:</b>	±1 minute/month (at 20°C/68°F, stand alone data logging)
<b>Memory:</b>	500,000 readings; software configurable memory wrap 250,000 readings in multiple start/stop	<b>Computer Interface:</b>	USB (interface cable included); 115,200 baud
<b>Wrap Around:</b>	Yes	<b>Software:</b>	XP SP3/Vista/Windows 7/Windows 8
<b>Start Modes:</b>	Immediate start Delay start up to 18 months Multiple pushbutton start/stop	<b>Anemometer Operating Environment:</b>	-55°C to +60°C (-67°F to +150°F); 0%RH to 100%RH
<b>Stop Modes:</b>	Manual through software Timed (specific date and time)	<b>Operating Environment:</b>	-20°C to +60°C (-4°F to +140°F), 0%RH to 100%RH
<b>Multiple Start/Stop Mode:</b>	Start and stop the device multiple times without having to download data or communicate with a PC	<b>IP Rating:</b>	IP65
<b>Multiple Start/Stop Mode Activation:</b>	To start the device: <i>Press and hold the pushbutton for 5 seconds, the green LED will flash during this time. The device has started logging.</i>  To stop the device: <i>Press and hold the pushbutton for 5 seconds, the red LED will flash during this time. The device has stopped logging.</i>	<b>Anemometer Dimensions:</b>	2.1" height x 7.53" Diameter (54mm height x 192 mm dia.) (mount post not included)
<b>Real Time Recording:</b>	The device may be used with PC to monitor and record data in real-time	<b>Housing Dimensions:</b>	2.9" x 5.8" x 1.5" (74mm x 148mm x 39mm)
<b>LED Functionality:</b>	Green LED blinks: <i>10 second rate to indicate logging</i> <i>15 second rate to indicate delay start</i>  Red LED blinks: <i>10 second rate to indicate low battery and/or full memory</i> <i>1 second rate to indicate an alarm condition</i>	<b>Weight:</b>	18.1oz (513g)
		<b>Materials:</b>	ABS Plastic

**BATTERY WARNING: FIRE, EXPLOSION, AND SEVERE BURN HAZARD. DO NOT SHORT CIRCUIT, CHARGE, FORCE OVER DISCHARGE, DISASSEMBLE, CRUSH, PENETRATE OR INCINERATE. BATTERY MAY LEAK OR EXPLODE IF HEATED ABOVE 80°C (176°F).**

\*SPECIFICATIONS ARE SUBJECT TO CHANGE WITHOUT NOTICE. SPECIFIC WARRANTY AND REMEDY LIMITATIONS APPLY. .

## ORDERING INFORMATION

MODEL	DESCRIPTION
Wind101A	Wind speed recording system. Includes 3-cup anemometer with sensor connection cable (25'), data recorder, weatherproof enclosure and the IFC200 (USB) interface cable and software kit.
Wind101A-50	Wind speed recording system. Includes 3-cup anemometer with sensor connection cable (50'), data recorder, weatherproof enclosure and the IFC200 (USB) interface cable and software kit.
Wind101A-100	Wind speed recording system. Includes 3-cup anemometer with sensor connection cable (100'), data recorder, weatherproof enclosure and the IFC200 (USB) interface cable and software kit.
Wind101A-150	Wind speed recording system. Includes 3-cup anemometer with sensor connection cable (150'), data recorder, weatherproof enclosure and the IFC200 (USB) interface cable and software kit.
LTC-7PN	Replacement battery for Wind101A

**ASK ABOUT OUR OTHER DATA LOGGERS**

- Temperature
- Humidity
- Pressure
- pH
- Level
- Shock
- LCD Display
- Pulse/Event/State
- Current
- Voltage
- Wireless
- Intrinsically Safe
- Spectral Vibration
- Motion