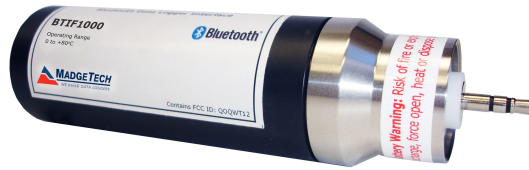


### Features

- Pushbutton start/stop
- Compatible with any Bluetooth device (Windows mobile 5.0 or higher)
- Battery life
  - 45 hours download
  - 150 hours standby
  - 5 years sleep
- Download data from under water
- User-friendly
- Modular FCC approved
- One button-operation
- LED displaying device status
- Data can be remotely collected from hundreds of loggers

### Applications

- Wireless data downloading
- Remote starting/stopping



The BTIF1000\* is a data logger accessory which adds Bluetooth wireless capabilities to the 1000 series data loggers. The BTIF1000 is designed to replace the IFC110 or IFC200 with a high-speed secure wireless link. This enables wireless in-the-field downloading using MadgeTechs new Pocket PC software. It is fully Bluetooth qualified and has a modular FCC approval (contains FCC ID QOQWT12).

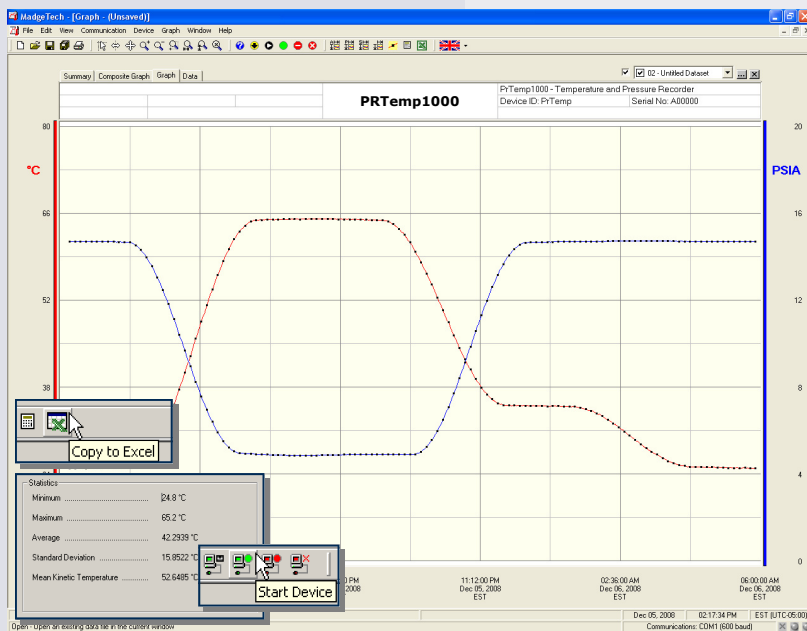
The BTIF1000 is equipped with one button operation making downloading and restarting easy. It is rated IP67, and can be used in wet or underwater environments.



*The BTIF1000 easily connects to a logger to give the device wireless capabilities.*

*\*The BTIF1000 is not designed for use with intrinsically safe products.*

**Battery Warning: Risk of fire or explosion. Do not recharge, force open, heat or dispose of in fire.**



### MadgeTech Data Recorder Software

displays the pressure and temperature data in an easy to use graph.

The Windows®-based software package allows the user to effortlessly collect, display and analyze data. A variety of powerful tools allow you to examine, export, and print professional looking data with just a click of the mouse.

Click [MadgeTechSoftware](http://www.madgetech.com) for more information or to download the software.