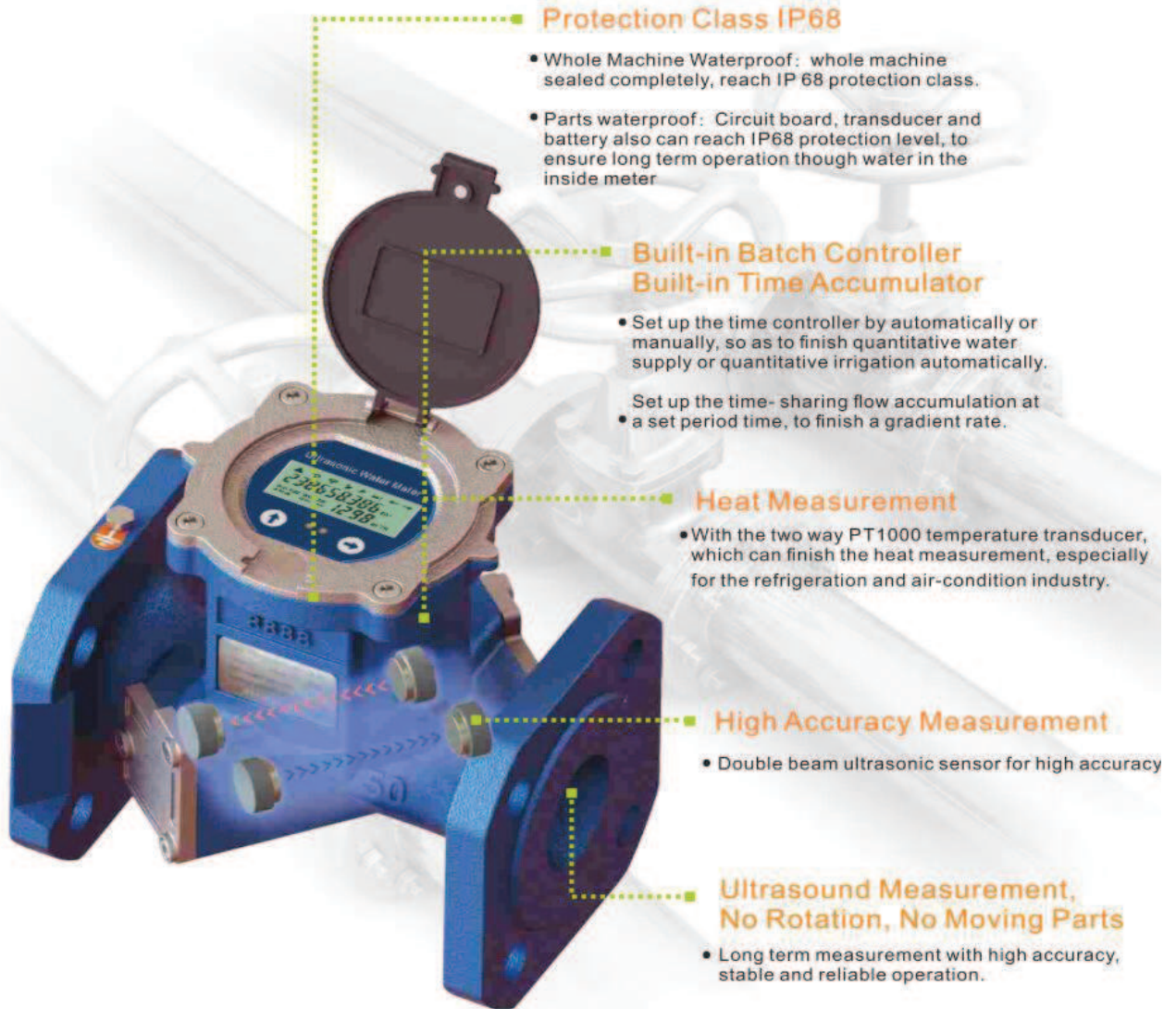


T3-1 Dual-Channel Ultrasonic Water Meter (DN15mm-DN300mm)



Item	Specification
Standard	ISO 4064-2005, GBT 778-2007
Measurement Liquid	Water, Sewage, Seawater(Other liquid need to customized), liquid should be full of the pipeline
Medium Temperature	0.1-30℃
Working Environment	Temperature; -10~45℃; Humidity≤100%(RH)
Working Pressure	1.6MPa (2.5Mpa optional)
The sensitivity of upstream	U3
The sensitivity of downstream	D0
Climatic and mechanical	C class
Electromagnetic compatibility class	E2 class
Communication Interface	RS485/USART/Infrared
Output Signal	Two Way OCT pulse output/TTL pulse output/One way 4-20mA output
Power supply	Built-in Lithium battery(3.6,19AhV)/DC8~36V power supply
Protection Class	IP68, can work 2 meters under water
Digital Display	Multi line 9 digital accumulative flow, 4 digital display for instantaneous flow, varies of state prompt and units
Data Storage	EEPROM/FLASH, automatically record the accumulative flow of last 512 days
Measurement Cycle	Measuring : 1 times/second ; Verification : 4 times/second
Power Consumption	10 years battery life

T3-1-K1 Sandwich Insertion Type Ultrasonic Water Meter (DN80/100/125/150)



Protection Class IP68

- Whole machine Waterproof : the seal property of whole machine achieve to IP68
- Parts waterproof : each part achieve to IP68 separately, ensure long term work even if the meter get into the water.

Built-in Quantitative Controllers Built-in Time Accumulator

- Automatically start the controller at the set time, achieve to supply water automatically, regularly and quantitatively.
- Time-sharing flow accumulation within the set period of time, to achieve gradient rate..

Ultrasonic measurement, No Rotation, No worn parts

- Ensure long-term high measuring accuracy.
- Apply to varieties of water quality, including the water contain gravel and weeds

Ultra-thin design

- 1 inch thickness of the meter helps to save installation space
- Made of nylon, high strength and corrosion Resistance, very low cost.
- No pressure loss.

Item	Specification
Standard	ISO 4064-2005, GBT 778-2007
Measure Fluid	Water, Sewage, Seawater(other liquid need to be customized) The pipeline should be full of liquid.
Medium Temperature	0.1-30 ℃
Working Environment	Temperature: -30~45 ℃; Humidity≤100%(RH)
Pressure	1.6MPa
Pressure Loss	None
Upstream Sensitivity	U5
Downstream Sensitivity	D3
Climate and mechanical	C level
Electromagnetic compatibility class	E2 level
Communication Interface	RS485/USART/Infrared
Output Signal	Two way OCT or TTL pulse output/ one way 4-20mA analog output
Power supply	Built-in Lithium battery(3.6V, 19Ah)/ DC8-36V power supply/ two-wire system 4-20mA
Protection Level	Ip68, available to work 2 meters underwater
Digital Display	9 digits cumulative flow and 4 digits instantaneous flow shown in two rows, and varies of state prompt and units.
Data Storage	Use EEPROM/FLASH, automatically record the cumulative flow of last 128 months and last 512 days.
Measurement Cycle	Measuring : 1 times/second ; Verification : 4 times/second
Power Consumption	≤ 2.7AH/Year, 6 years battery life

➤ **Catalog of T3-1 Series IP68 Ultrasonic Water meter**

Picture	Pipe diameter (mm)	Channel (sensors inside the pipe)	Material	Process	Type	Power Supply	Standard Configuration		
 T3-1	DN15	Single Channel	Copper with Plastic Head	Forging	Industrial	Inbuilt battery/ DC24V	RS485&DC8~36V		
	DN20	Single Channel		Forging	Industrial		RS485&DC8~36V		
	DN25	Single Channel		Forging	Industrial		RS485&DC8~36V		
	DN32	Single Channel		Forging	Industrial		RS485&DC8~36V		
	DN40	Single Channel		Casting	Industrial		RS485&DC8~36V		
 T3-1	DN50	Dual Channel	Ductile Iron	Casting	Industrial		Inbuilt battery/ DC24V	RS485&DC8~36V	
	DN65	Dual Channel	Ductile Iron	Casting	Industrial			RS485&DC8~36V	
	DN80	Dual Channel	Ductile Iron	Casting	Industrial			RS485&DC8~36V	
	DN100	Dual Channel	Ductile Iron	Casting	Industrial			RS485&DC8~36V	
	DN125	Dual Channel	Ductile Iron	Casting	Industrial			RS485&DC8~36V	
	DN150	Dual Channel	Ductile Iron	Casting	Industrial			RS485&DC8~36V	
 T3-1	DN200	Dual Channel	Carbon Steel with Plastic Head	Welding	Industrial			Inbuilt battery/ DC24V	RS485&DC8~36V
	DN250	Dual Channel		Welding	Industrial				RS485&DC8~36V
	DN300	Dual Channel		Welding	Industrial				RS485&DC8~36V
 T3-1-K1	DN80	Signal Channel	Polyamide	-	Irrigation				Inbuilt battery/ DC24V
	DN100	Signal Channel	Polyamide	-	Irrigation	RS485&DC8~36V			
	DN125	Signal Channel	Polyamide	-	Irrigation	RS485&DC8~36V			
	DN150	Signal Channel	Polyamide	-	Irrigation	RS485&DC8~36V			